

Preservation & Open Space District *integrated approach to climate change*

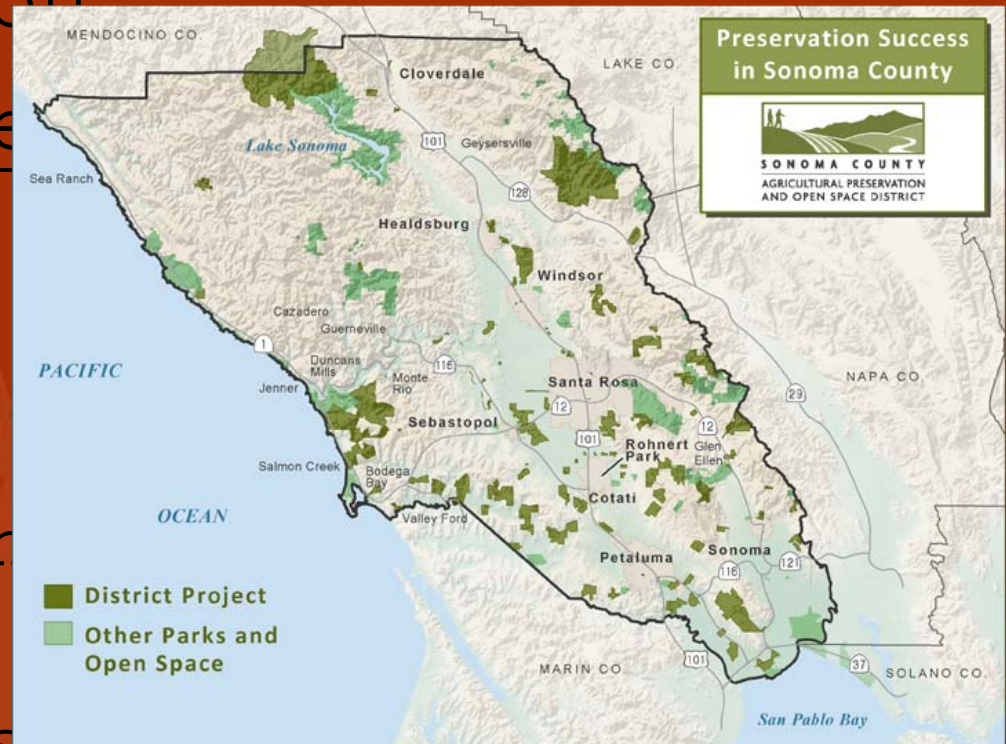
- mission/core functions
- strategic plan: climate change initiative
- multi-objective integrated approach
- focus on collaboration/partnerships



Mission & Core Functions

- diverse mission
- core activities

- conservation planning
- acquisition
- land stewardship
- easements & fee properties



Strategic Plan Initiatives



- Open District Recreational Lands to Public Access
- Provide Support for Local Agricultural Production
- Expand the Small Farms Initiative
- Stewardship of Land and Natural Resources
- Support Sustainable Water for Sonoma County
- Actively Participate in County and Statewide Efforts to Address Climate Change (mitigation & adaptation)
- Expand District Programs to Connect Underserved Communities to the Land
- Establish a "Walk, Ride, and Roll the County" Program



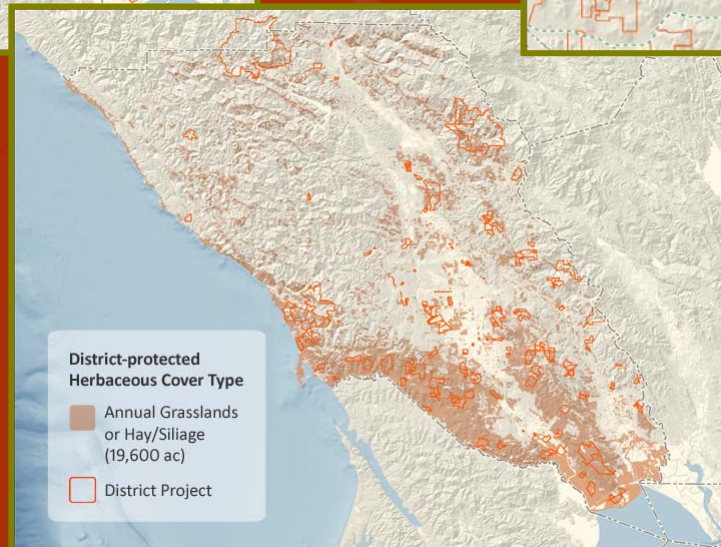
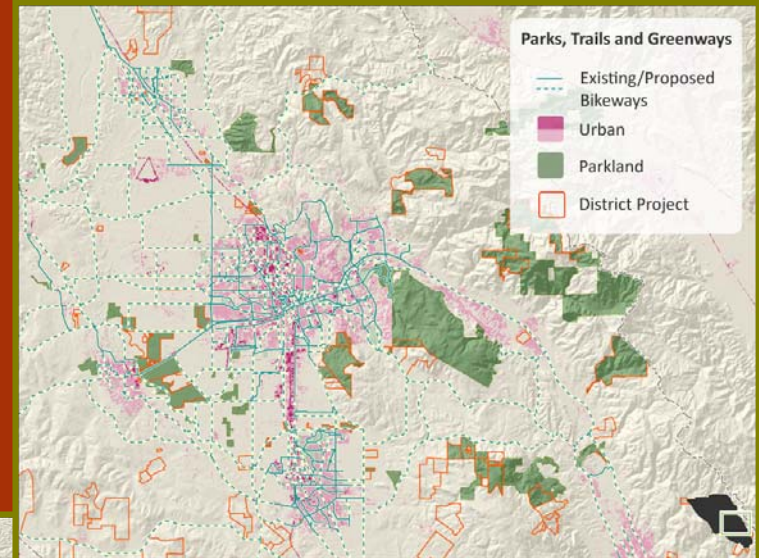
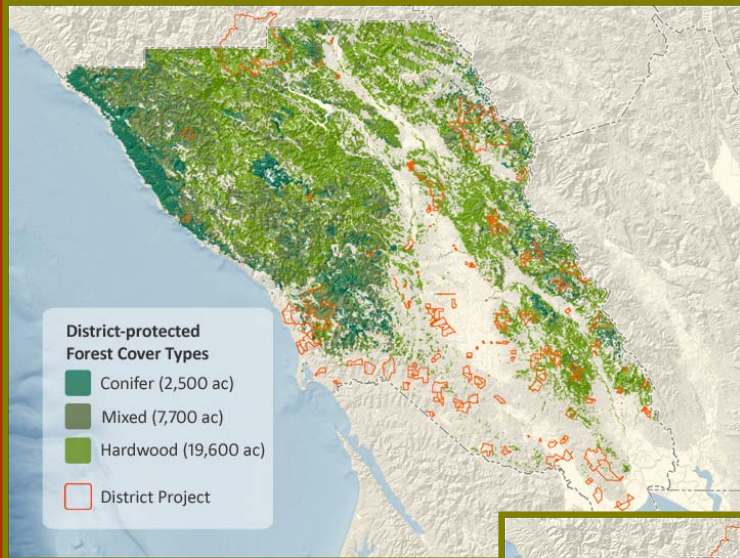
Multi-objective

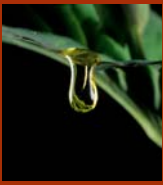
Integrated Approach

- climate change mitigation & adaptation co-benefits support other initiatives
 - watershed conservation/riparian corridor enhancement/recreation/source watershed protection
 - landscape conservation/reserve design/dispersal corridors
 - public access/alternative transportation/underserved communities



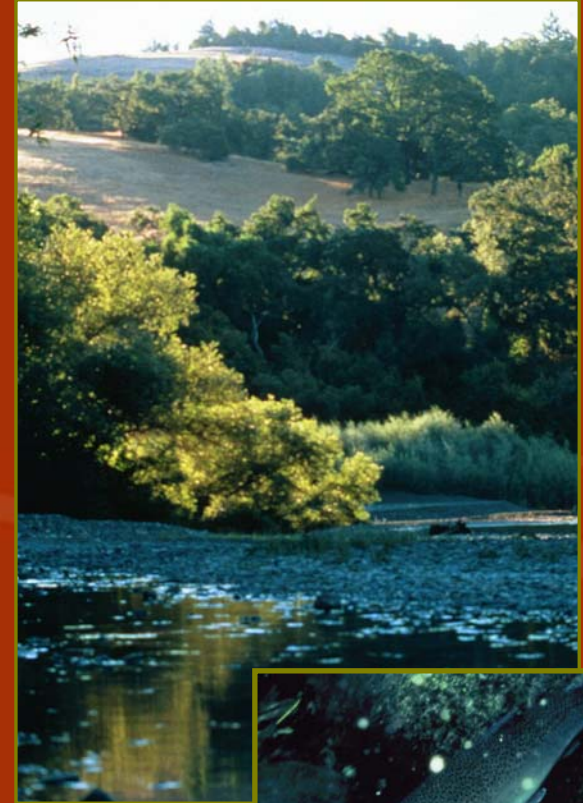
Climate Adaptation & Mitigation





Adaptation Watershed Conservation & Enhancement

- adaptation:
 - dispersal corridors
 - climatic and habitat diversity
 - flood attenuation
 - water supply reliability
 - downstream communities/resiliency
- mitigation
 - sequestration via protection
 - sequestration via afforestation



Collaboration & Partnerships

- agency & NGO partnerships
- research partnerships
- demonstration projects on District lands
- high capacity in local RCDS
NGOs
- collaborating/complementary



Future

- expansion of focus on integrated strategic planning – how can we get the biggest return on investment and be a catalyst for positive change?
- federal & state legislative programs: enhancing revenue and capacity in the county and region
- climate change mitigation – alternate transportation routes, sequestration, carbon markets, District operations
- climate change adaptation – how can the District support communities and ecosystems in adapting to climate change?
- strategic partnerships – building long term relationships that are mutually beneficial and enhance capacity

